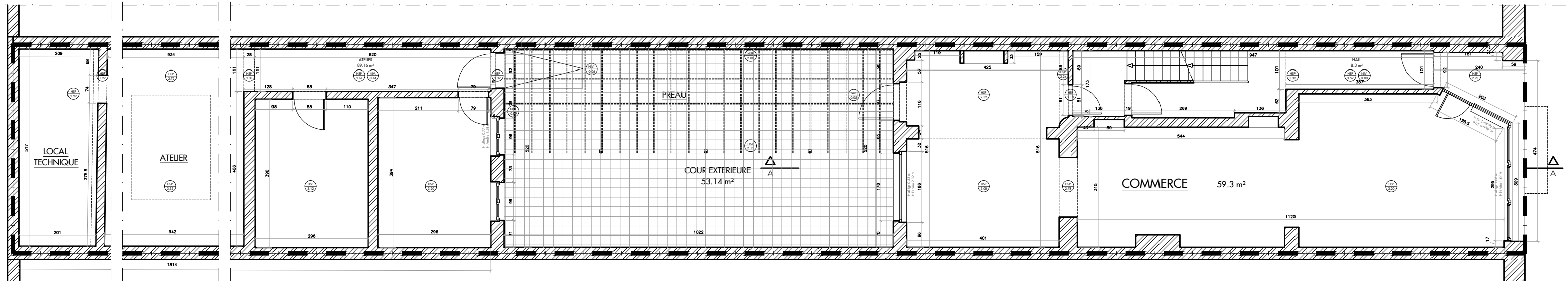
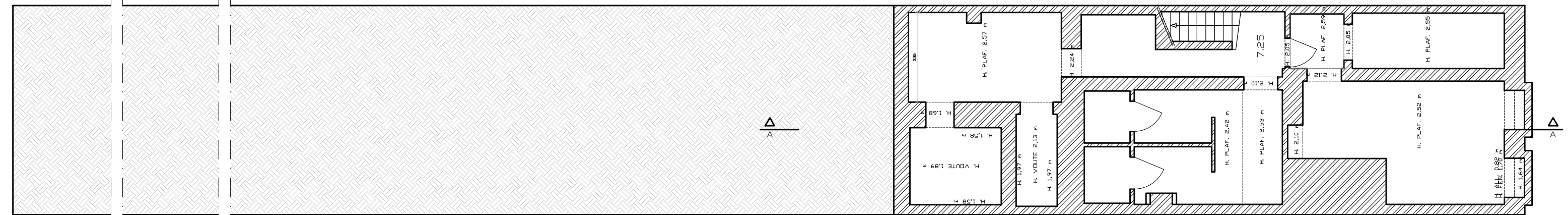


R+1



RDC



SOUS-SOL



NEST ARCHITECTS

Rue Bara 175 - 1070 Bruxelles | Tel : 02 560 21 83 | Mail : info@nestarchitects.be

REGULARISATION D'UN IMMEUBLE DE LOGEMENTS ET COMMERCE

SITUATION EXISTANTE DE FAIT : SS, RDC, R+1

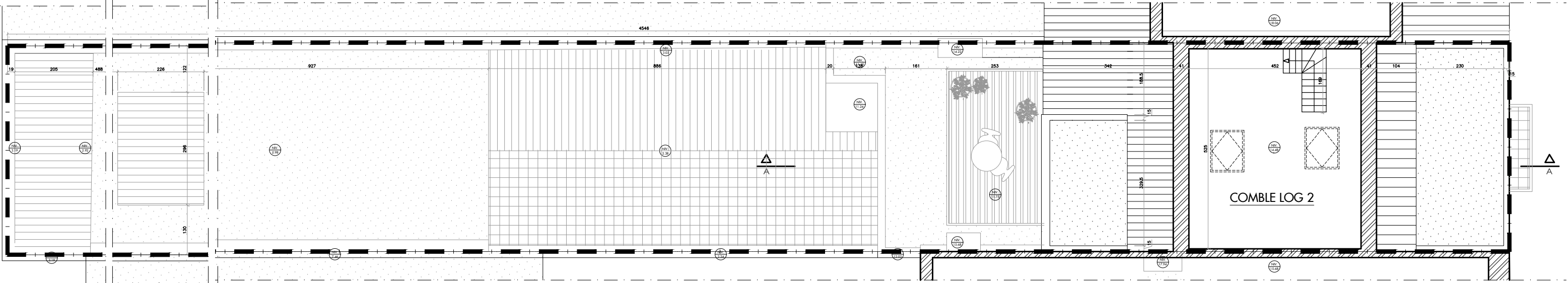
CHAUSSEE D'IXELLES 347 - 1050 IIXELLES



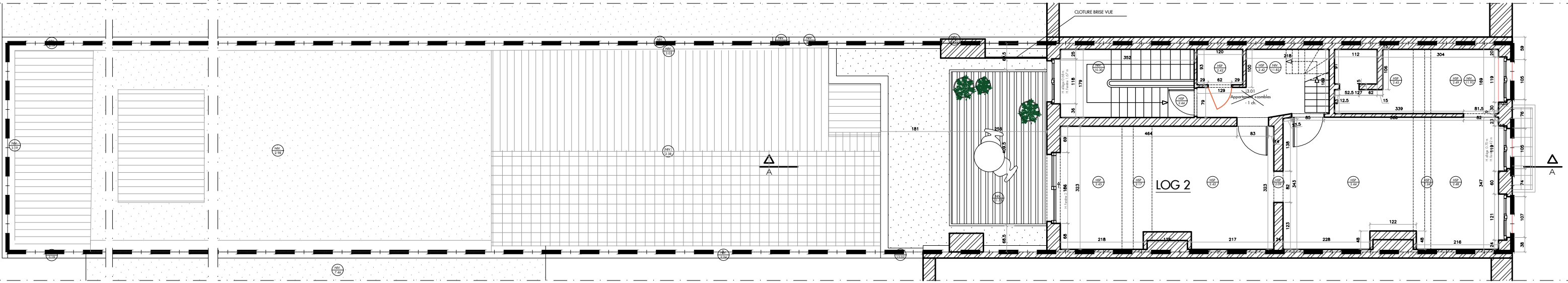
2504

ECH.1 : 100

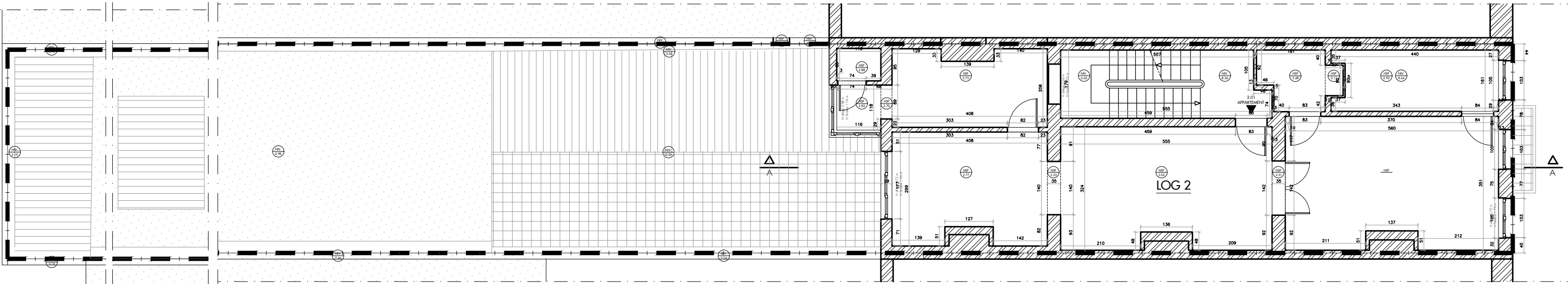
26-11-2025



COMBLE



R+3



R+2



NEST ARCHITECTS

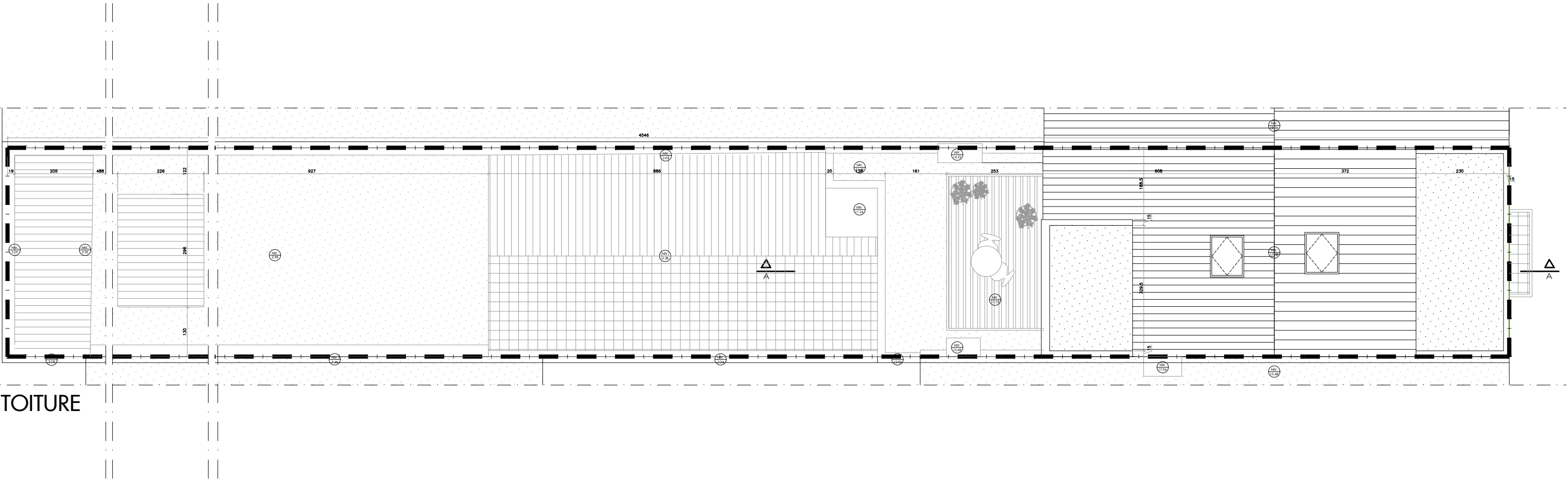
Rue Bara 175 - 1070 Bruxelles | Tel : 02 560 21 83 | Mail : info@nestarchitects.be

REGULARISATION D'UN IMMEUBLE DE LOGEMENTS ET COMMERCE
SITUATION EXISTANTE DE FAIT : R+2, R+3, COMBLE

CHAUSSEE D'IXELLES 347 - 1050 IIXELLES



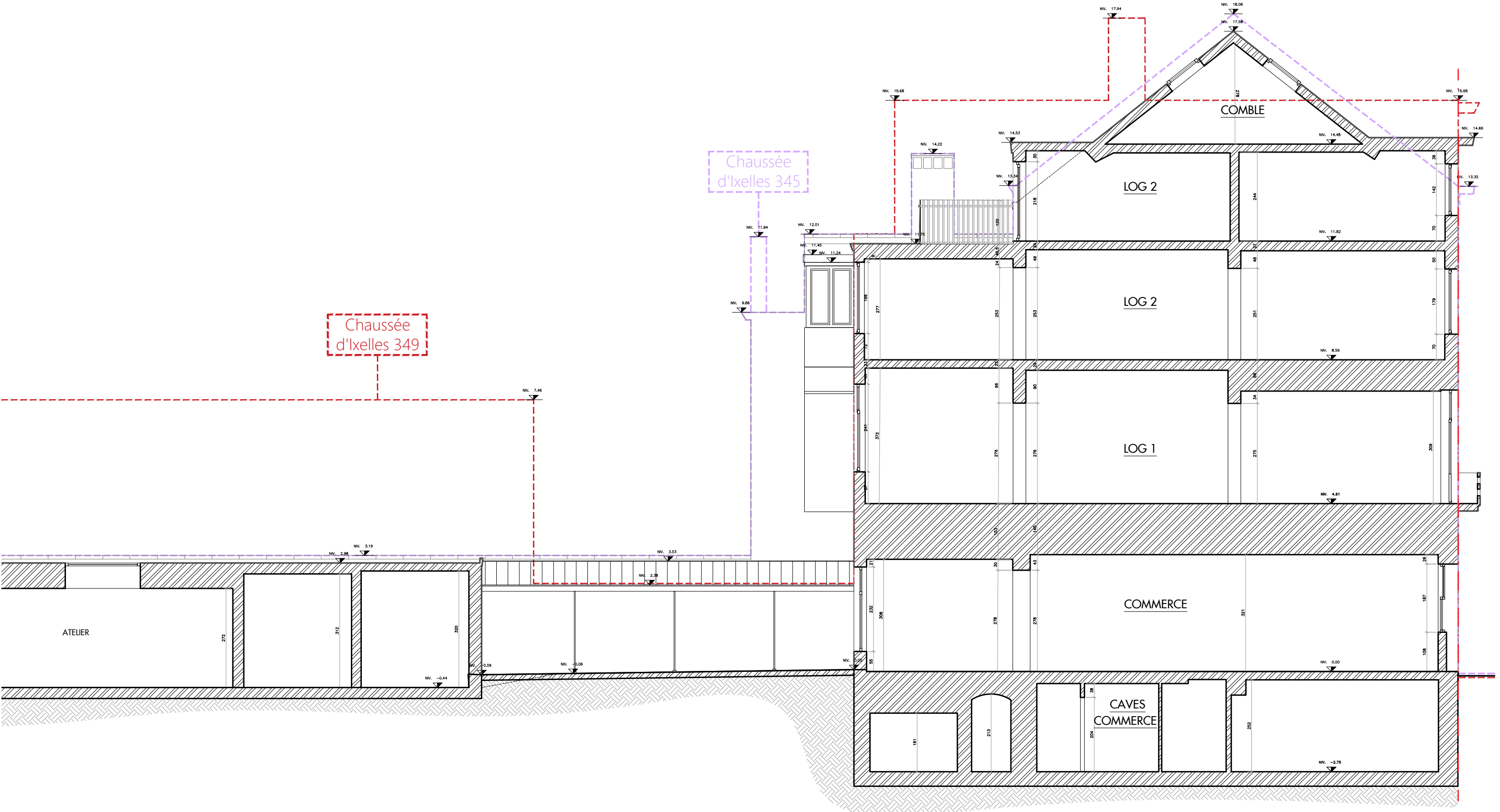
2504
ECH.1 : 100
26-11-2025



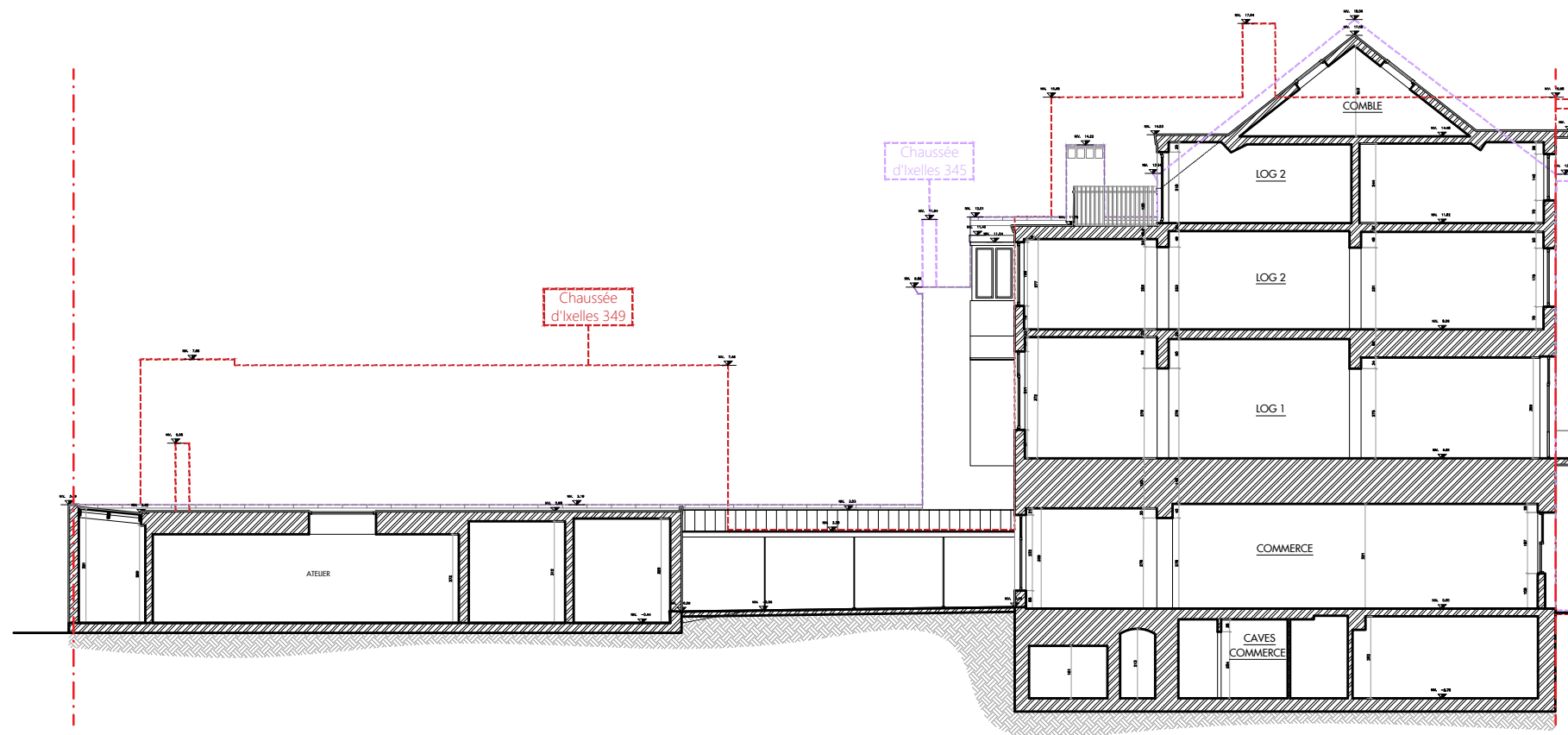
NEST ARCHITECTS

Rue Bara 175 - 1070 Bruxelles | Tel : 02 560 21 83 | Mail : info@nestarchitects.be

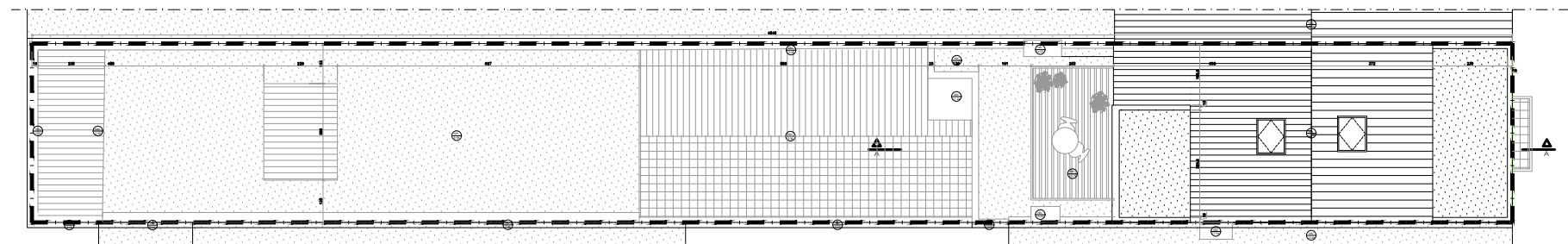




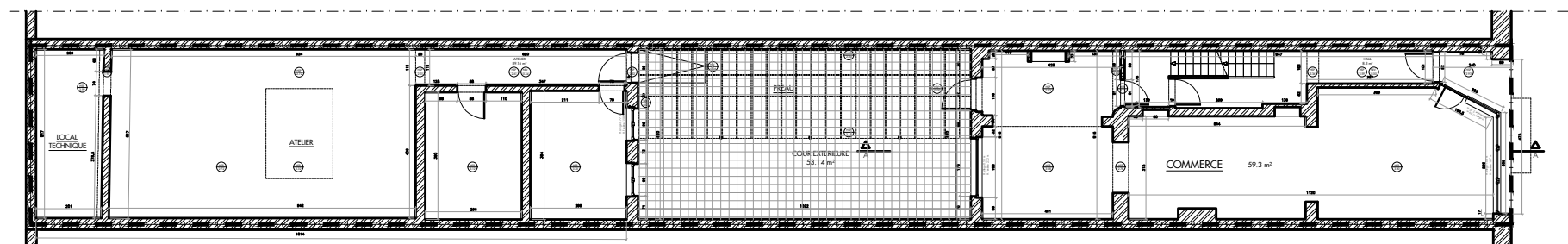
COUPE A-A



COUPE A-A



TOITURE



RDC



NEST ARCHITECTS

Rue Bara 175 - 1070 Bruxelles | Tel : 02 560 21 83 | Mail : info@nestarchitects.be

REGULARISATION D'UN IMMEUBLE DE LOGEMENTS ET COMMERCE

SITUATION EXISTANTE DE FAIT : RDC , TOITURE , COUPE

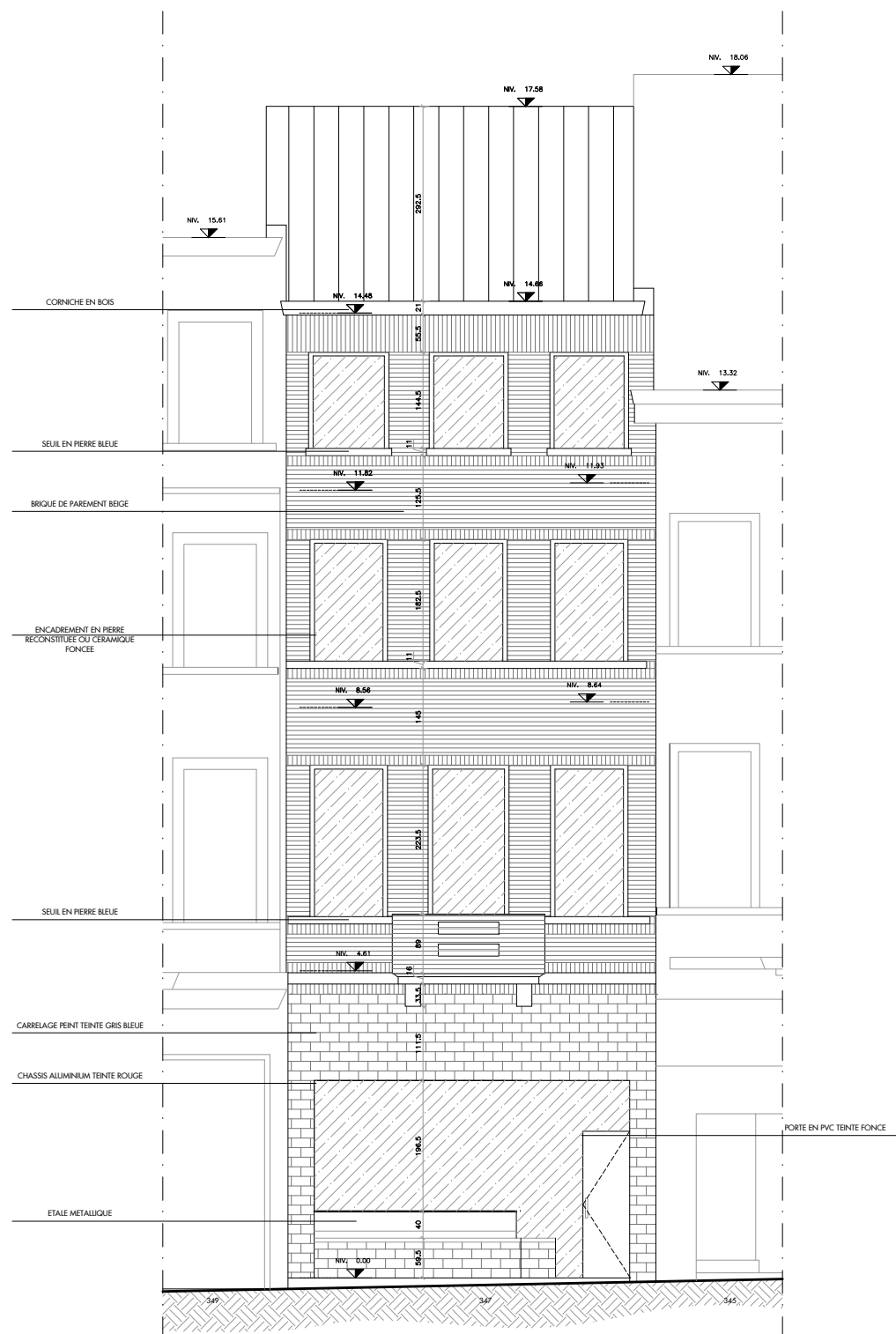
CHAUSSEE D'IXELLES 347 - 1050 IXELLES



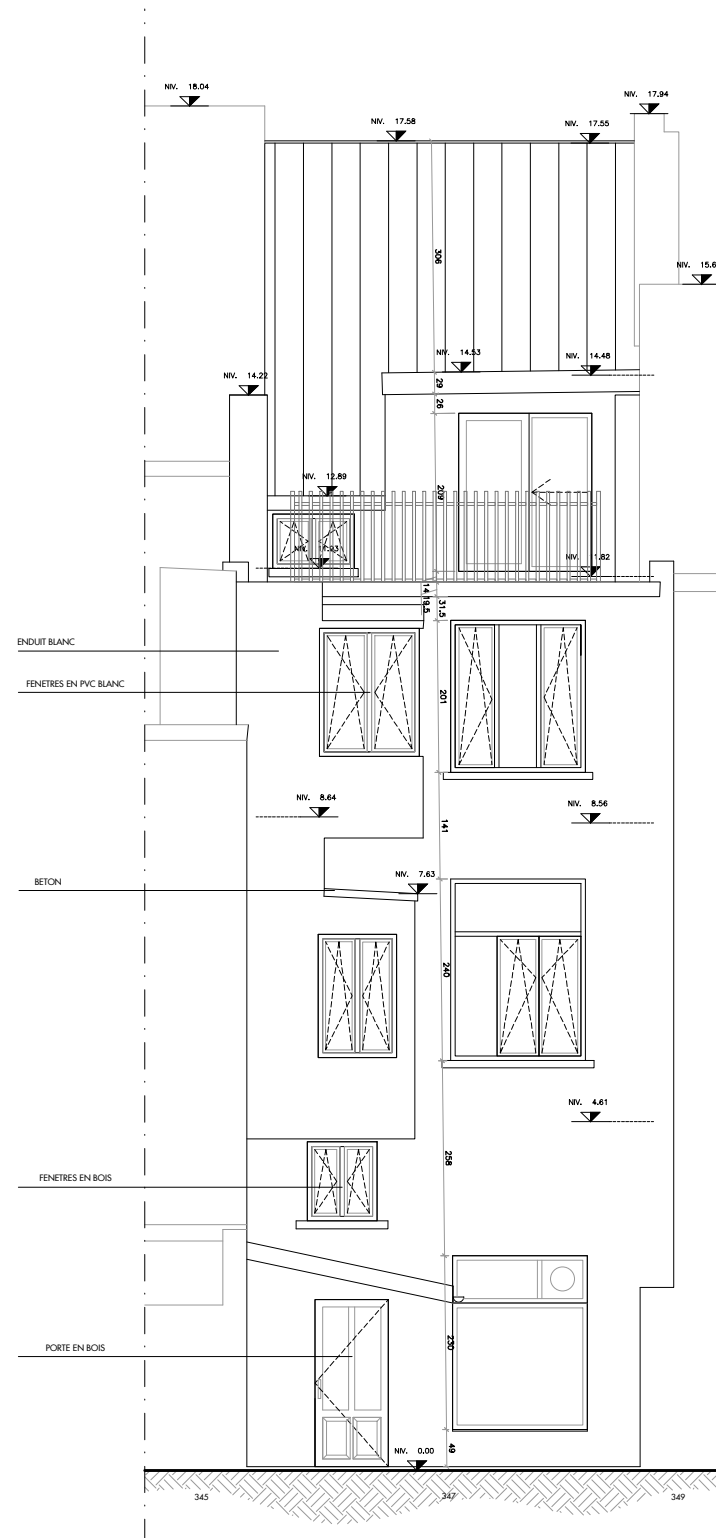
2504

ECH.1 : 200

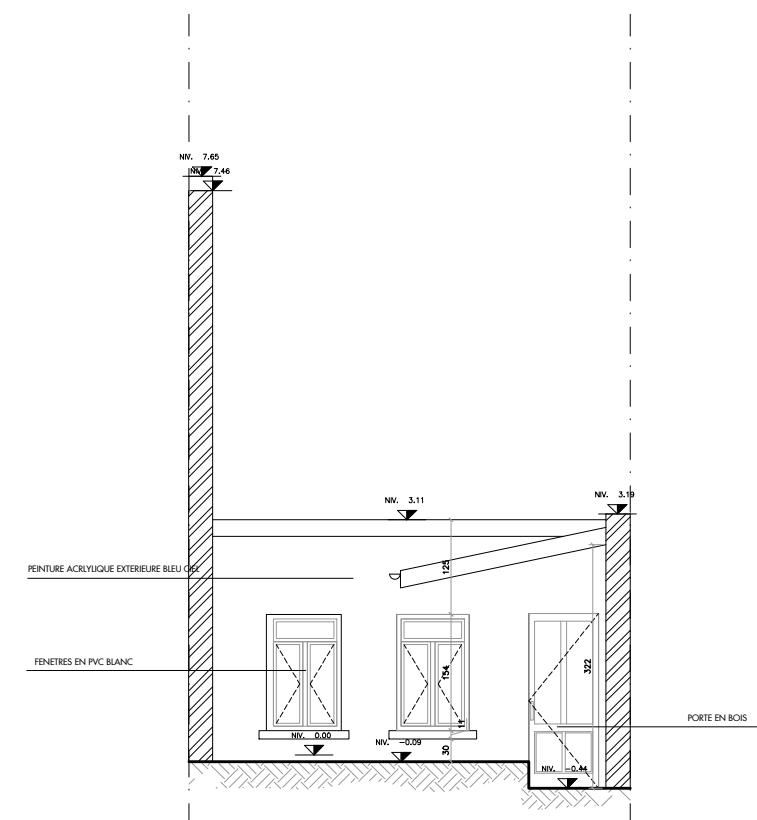
26-11-2025



FACADE AVANT



FACADE ARRIERE



FACADE AVANT
BATIMENT ARRIERE